

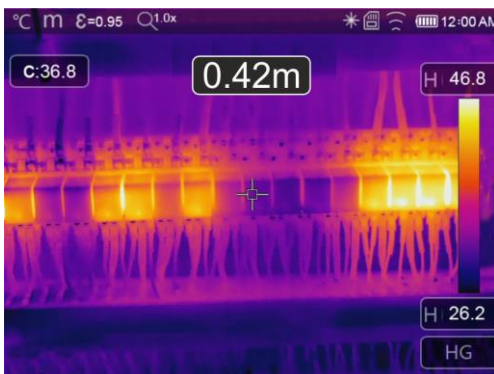
The **THT70n** model is an advanced infrared camera with capacitive touch-screen TFT color display for quick and intuitive advanced use by any kind of thermograph operator



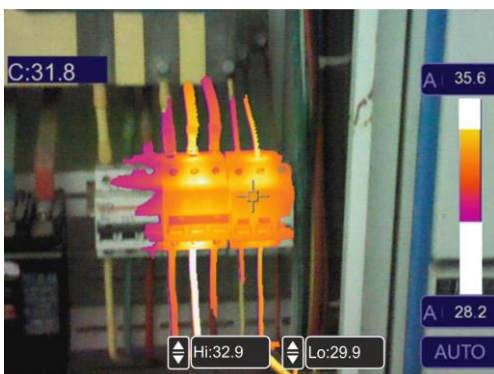
General menu with icons



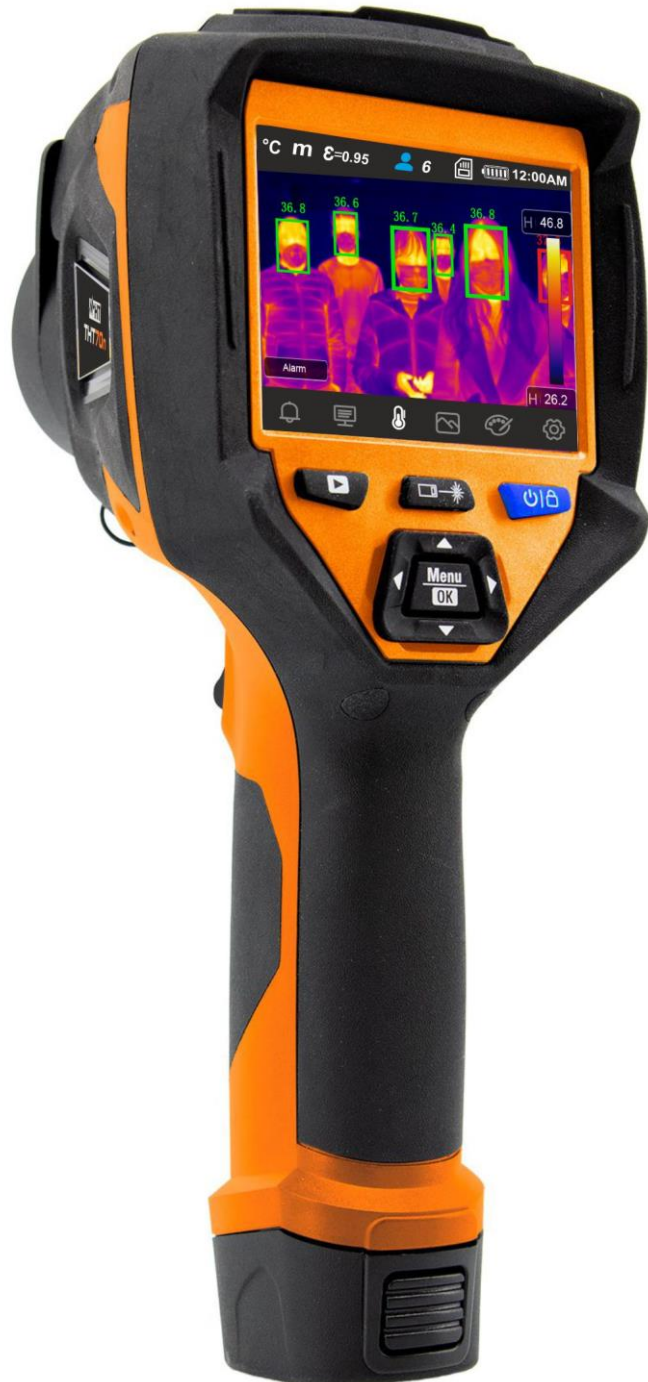
Screening function with Face Mode



Distance measurement with laser pointer



"Visual zone" isotherm feature





## 1. IMAGING PERFORMANCE

Thermal	
Detector type	UFPA
Spectral range	8 ÷ 14µm
Resolution / Pxl size	384 x 288 pxl / 17µm
Thermal sensitivity/NETD	<0.05°C @ 30°C / 50mK
Field of View (FOV)	17° x 12.7° (22mm lens)
Minimum focal distance	0.5m
IFOV (@1m)	0.77mrad
Focusing	Manual on lens
Image frequency	50Hz
Color palettes	8 Standard + 4 Isotherms
Visible	
Integrated camera	5Mpxl, FOV 59°

## 2. IMAGING / IR VIDEO DISPLAY

Display type	3.5" TFT color, capacitive touch-screen, high brightness
Image mode	IR, Visible, Fusion PiP, Auto Fusion
IR Video	Recording and saving MP4 format
Video output	HDMI
Electronic zoom	x1 ÷ x32 in continuous way

## 3. TEMPERATURE MEASUREMENT

Range	Resolution	Accuracy (*)
-20°C ÷ 650.0°C	0.1°C	±2%rdg or ±2°C (higher value)
-4.0°F ÷ 1202.0°F	0.1°F	±2%rdg or ±3.6°F (higher value)

(\*) Ambient temperature: 10°C ÷ 35°C, Object temperature: >0°C

## 4. TEMPERATURE MEASUREMENT SCREENING MODE

Range	Resolution	Accuracy
32.0°C ÷ 42.0°C	0.1°C	±0.5°C
89.6°F ÷ 107.6°F	0.1°F	±0.9°F

## 5. GENERAL SPECIFICATIONS

Measurement cursors	4 (1 fixed central + 3 freely positionable on image)
Laser pointer	Class 2 according with IEC 60825-1
Built-in illuminator	White light LED
Measurement modes	Automatic / Manual / Histogram
Emissivity correction	0.01 ÷ 1.00 + internal table with common materials
Measurement functions	Automatic correction based on distance, relative humidity, ambient temperature, reflexed temperature, offset
Advanced analysis	Spots (max3), Lines (max 2), Areas (max 3), "Hot/Cold" points, Face mode temperature detection (max 10 persons)
Distance measurement	range: 0.05m÷30m, accuracy:±5mm, laser pointer
Alarm on temperature	Associated to measurements spots
Temp. Compensation	only Screening mode
Operating temperature	-15°C ÷ 50°C
Operating humidity	10%RH ÷ 90%RH
Storage temperature	-40°C ÷ 70°C
Storage humidity	10%RH ÷ 90%RH
Encapsulation	IP54 according with IEC529
Shock	25G, according with IEC60068-2-29
Vibrations / Drop test	2G, according with IEC60068-2-6 / 2m
Dimensions (L x W x H)	260 x 101 x 120mm
Weight(battery included)	850g



## 6. IMAGE STORAGE AND EXTERNAL INTERFACE

Memory	Internal memory (3.4GB) + Micro SD card 8GB (max 32GB)
File format	JPEG standard (snapshots), HIR (radiometric)
Memory size	1000 pics/45min video (internal memory), >6000 pics (micro SD)
Voice annotation	60 s/image
Textual annotation	With internal virtual keyboard
PC interface	microUSB/USB 2.0 (download IR images/videos to PC)
WiFi connection	For connection to mobile devices through <b>HTProCamera</b> APP

## 7. POWER SUPPLY

Battery type	Rechargeable Li-ION, 3,7V 5200mAh
Charging system	In camera or in base charger
Battery life	Approx. 3 hours (stand-by and WiFi off)
External power	External adapter 100/240VAC (50/60Hz)/5VDC, 2400mA

**This instrument complies with Directive EMC 2014/35/EU  
This instrument satisfies the requirements of European Directive 2011/65/EU (RoHS) and 2012/19/EU (WEEE)**